

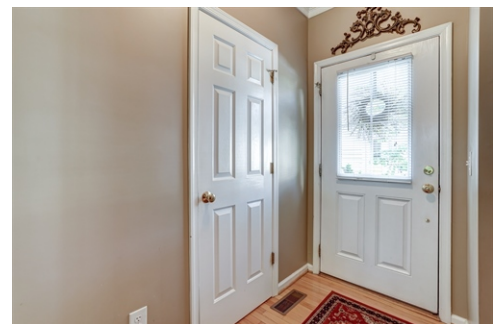
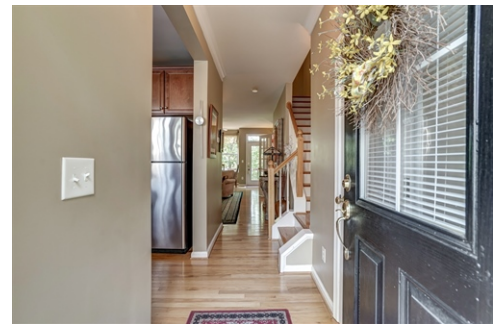
Welcome Home!

\$ 349,000



111D Melbourne Park Circle, Charlottesville, VA 22901

- » Beds: 3 | Baths: 2 Full, 2 Half
- » MLS #: 620004
- » Condominium | 1,991 ft<sup>2</sup>
- » Meticulously maintained and low maintenance in the heart of Charlottesville!
- » Beautifully decorated with gleaming hardwood floors throughout the open main level.
- » More Info: [111DMelbourneParkCircle.com](http://111DMelbourneParkCircle.com)



Denise Ramey  
[www.deniseramey.com](http://www.deniseramey.com)  
(434) 812-2388 (Office)  
[deniserameyrealtor@gmail.com](mailto:deniserameyrealtor@gmail.com)  
<http://www.DeniseRamey.com>

**LONG & FOSTER**  
REAL ESTATE  
Long & Foster Real Estate  
325 Four Leaf Lane  
Suite 100  
Charlottesville, VA 22903  
(434) 812-2388

This meticulously maintained condo is perfectly situated minutes from the Downtown Mall and McIntire Park. Designer appointed and gently lived in. Great deck space outdoors and wonderful living spaces indoors. You'll love the gleaming hardwood floors and open floor plan throughout the main level. This home has been professionally painted and features upgraded light fixtures throughout. The light filled kitchen includes stainless steel appliances and an open pass-through to the spacious great room. Dining and living spaces on the main level are great for entertaining. Gas fireplace features marble surround and built in shelves and bar. The owners suite on second floor includes updated private bathroom and large closet. It feels like you're living in a tree house! Mature trees and vegetation create lovely living spaces inside and out. The large guest bedroom on the second floor includes a full bathroom with double vanity too! Finished loft space with skylight on upper level is great as a home office or media space! Walk out lower level includes large finished rec room or guest bedroom with half bathroom. Separate laundry/utility room too.

